

CIRCUIT INSPECTION

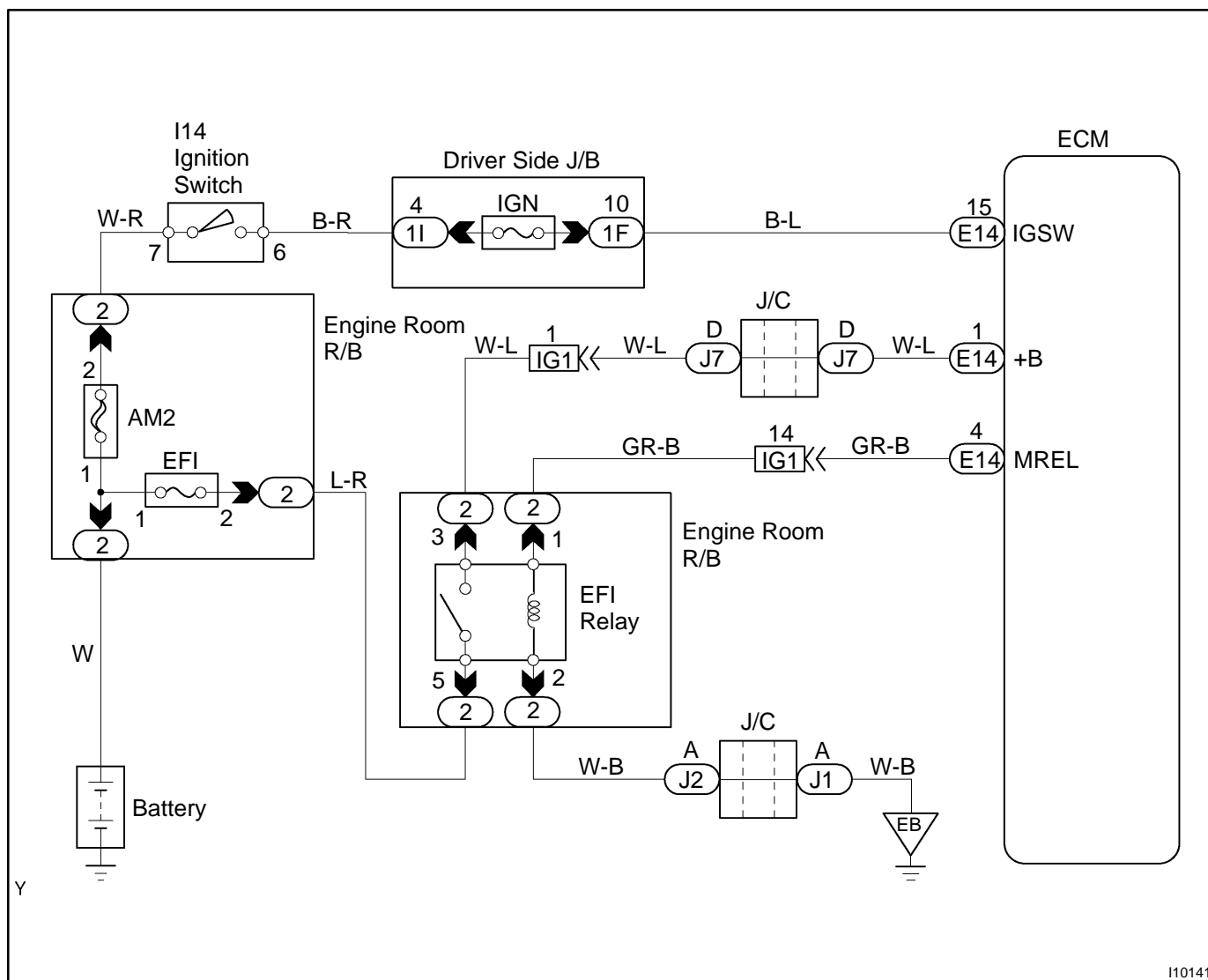
DTC	B2785/99	IG Switch ON Malfunction
------------	-----------------	---------------------------------

DTC	B2786/99	IG Switch OFF Malfunction
------------	-----------------	----------------------------------

CIRCUIT DESCRIPTION

DTC No.	DTC Detection Condition	Trouble Area
B2785/99	<ul style="list-style-type: none"> Short circuit in IG switch circuit Ignition switch adheres to ON position 	<ul style="list-style-type: none"> Ignition switch EFI main relay
B2786/99	<ul style="list-style-type: none"> Open circuit in IG switch circuit Ignition switch adheres to OFF position 	<ul style="list-style-type: none"> Wire harness ECM

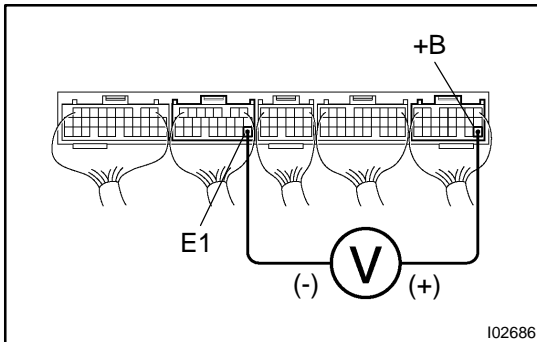
WIRING DIAGRAM



I10141

INSPECTION PROCEDURE

- 1 Check voltage between terminals +B and E1 of ECM connectors.**



PREPARATION:

- (a) Remove the glove compartment.
- (b) Turn the ignition switch ON.

CHECK:

Measure the voltage between terminals +B and E1 of the ECM connectors.

OK:

Voltage: 9 - 14 V

OK

Proceed to next circuit inspection shown in problem symptoms (See page [DI-497](#)).

NG

- 2 Check for open in harness and connector between terminal E1 of ECM and body ground (See page [IN-28](#)).**

NG

Repair or replace harness or connector.

OK

- 3 Check EFI main relay (Marking: EFI) (See page [SF-35](#)).**

NG

Replace EFI main relay.

OK

- 4 Check EFI fuse.**

NG

Check for short in all harness and components connected to EFI fuse.

OK

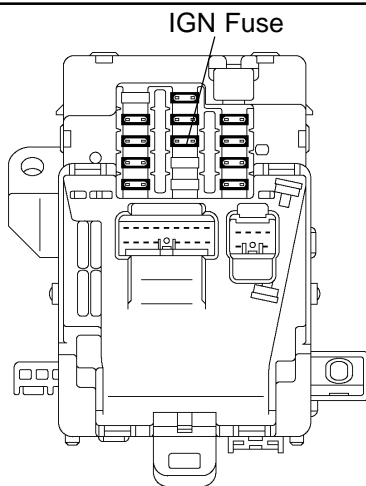
- 5** Check for open harness and connector between EFI main relay (Marking: EFI) and battery, and EFI main relay and ECM (See page [IN-28](#)).

NG

Repair or replace harness or connector.

OK

- 6** Check IGN fuse.



PREPARATION:

Remove the IGN fuse from the driver side J/B.

CHECK:

Check the continuity of the IGN fuse.

OK:

Continuity

NG

Check for short in all harness and components connected to IGN fuse.

OK

- 7** Check ignition switch (See page [BE-12](#)).

NG

Replace ignition switch.

OK

8	Check for open circuit in harness and connector between ignition switch and EFI main relay (Marking: EFI), and EFI main relay and body ground (See page IN-28).
---	--

NG

Repair or replace harness or connector.

OK

Replace ECM.